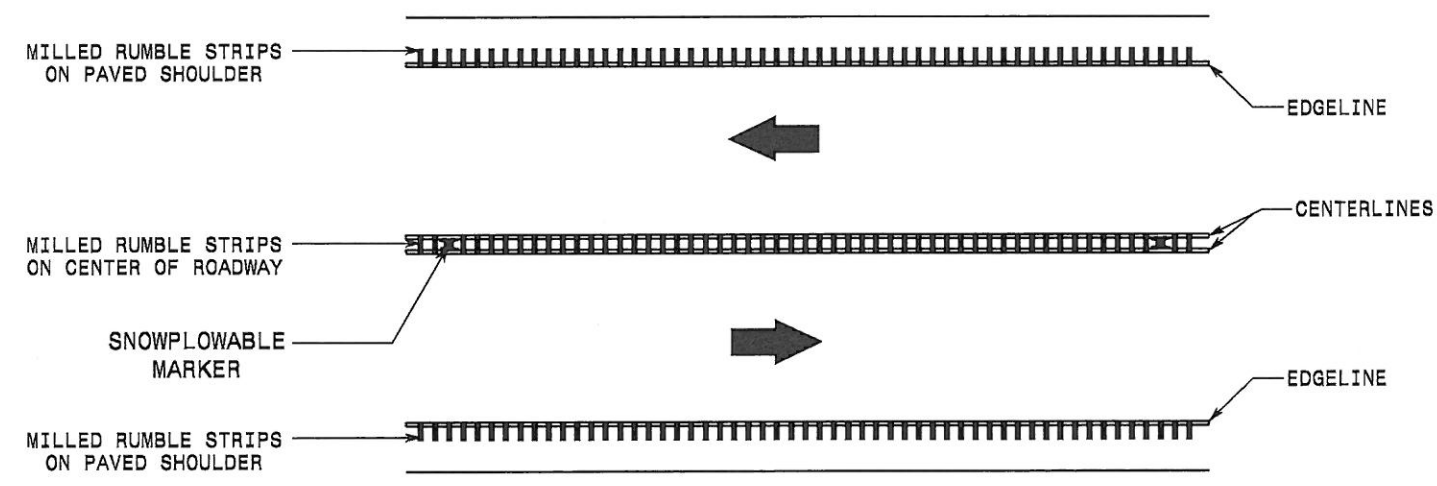




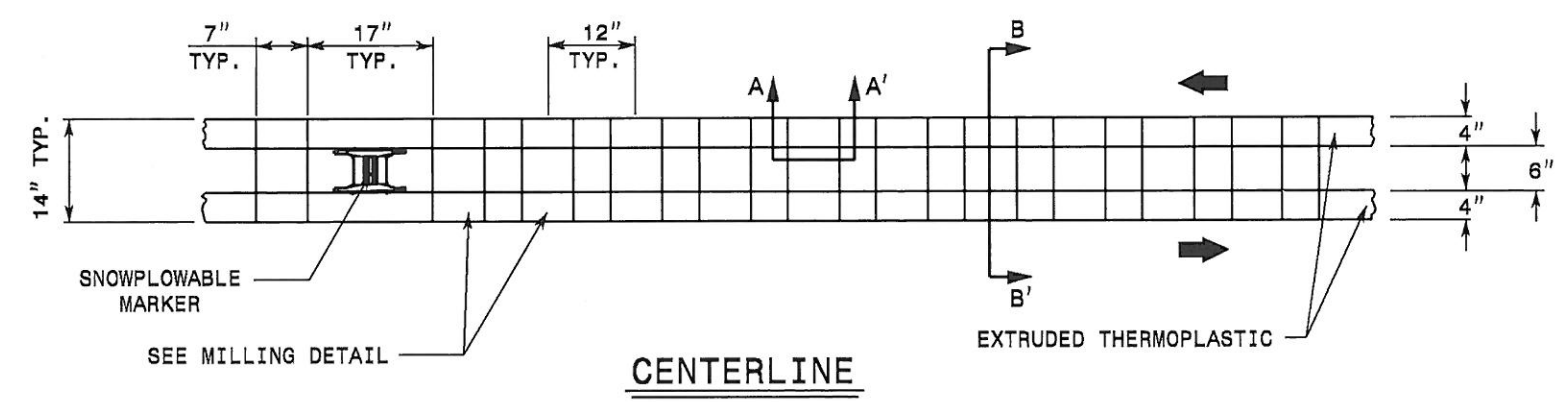
Limits of Work on NC 133 from Plantation Rd to 2,250 feet north of Plantation Road



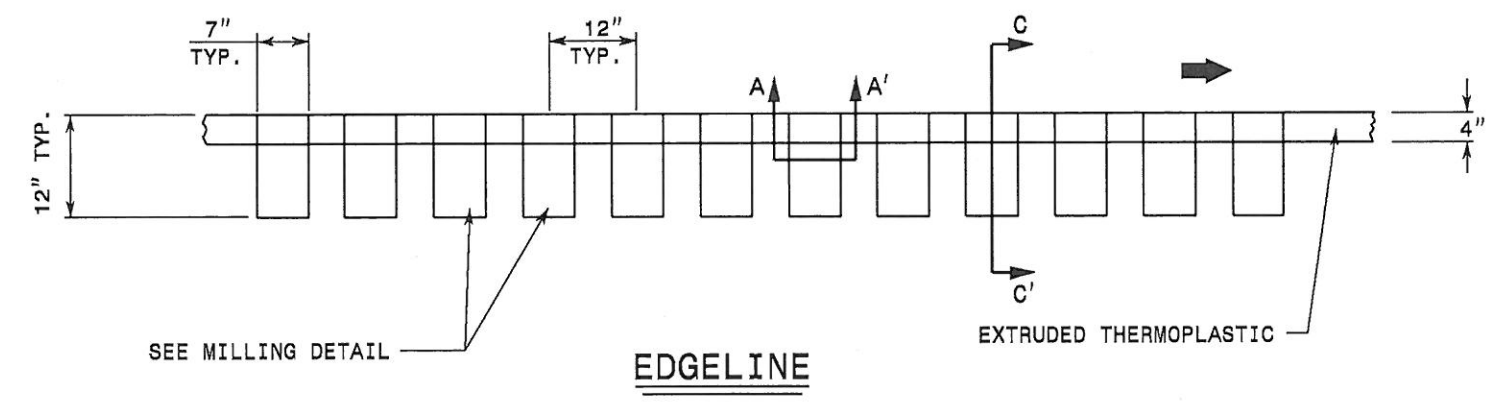
**LANE TREATMENT**

**NOTES:**

- 1) USING A VACUUM IN THE SAME OPERATION, REMOVE ALL DEBRIS FROM THE MILLINGS JUST PRIOR TO PLACING ANY PAVEMENT MARKINGS.
- 2) ENSURE GLASS BEADS ARE SPREAD UNIFORMLY OVER THE ENTIRE SURFACE OF PAVEMENT MARKING.
- 3) SNOWPLOWABLE MARKERS SHALL BE INSTALLED ON 20' INCREMENTS. DO NOT MILL RUMBLE IN SECTION WHERE SNOWPLOWABLE MARKERS WILL BE INSTALLED.
- 4) LOCATE EDGELINES FROM CENTER OF ROADWAY WIDTH.

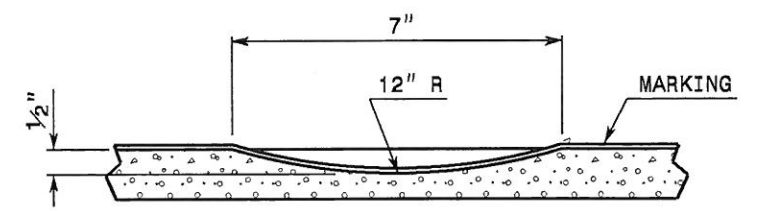


**CENTERLINE**

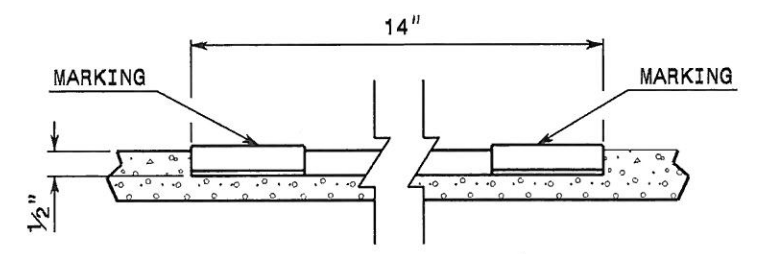


**EDGELINE**

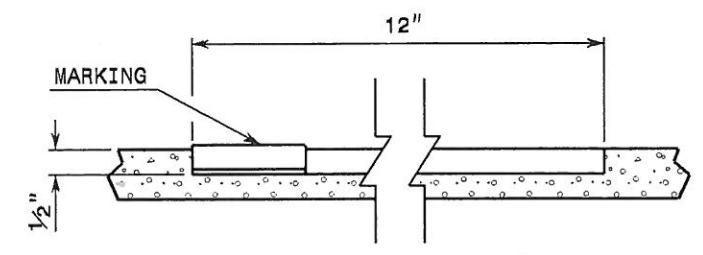
**MILLING/MARKING DETAILS**



**SECTION A-A'**



**SECTION B-B'**



**SECTION C-C'**

03-APR-2014 11:33 S:\S&DU\Standards and Drawings\Drawings\Milled Rumble Stripe\Div 2 NC 133\Milled center and edge rumble stripe.dgn mmorrlquez AT TE261402L

APPROVED: _____	DATE: _____	<b>CENTER AND EDGELINES MILLED RUMBLD STRIPE</b>	
SEAL			
		DATE: _____	DWG. BY: _____
DESIGN BY: _____	REVIEWED BY: _____		